



2023 4 3

Z0002867
F0311809
02161088063

F3082641
02161088063

4

9-1

PMI

3

4

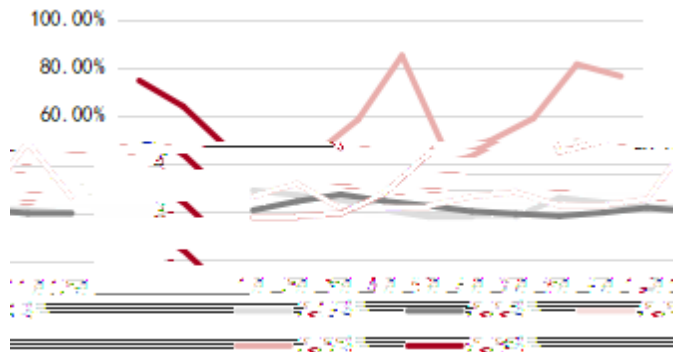
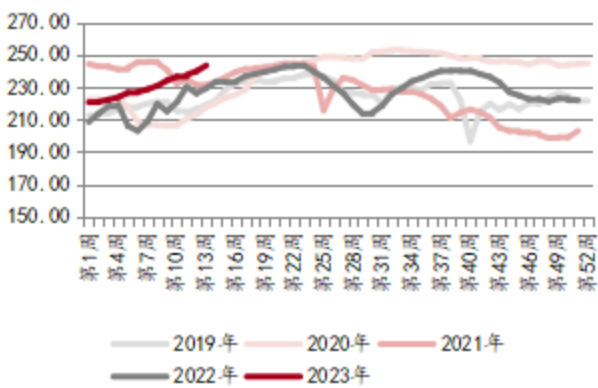
1.

13.24%

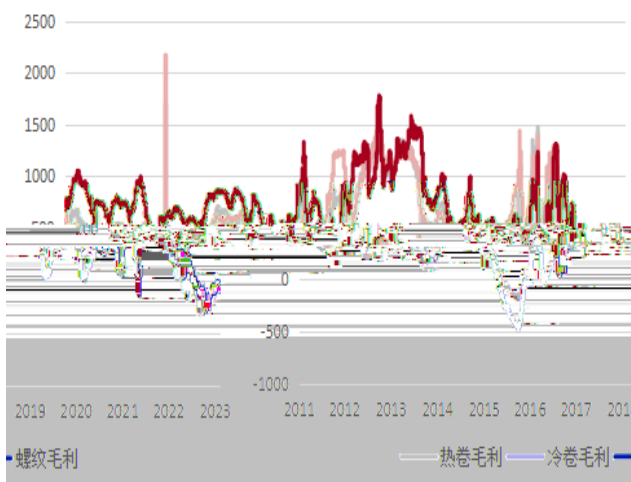
103 /

112 /

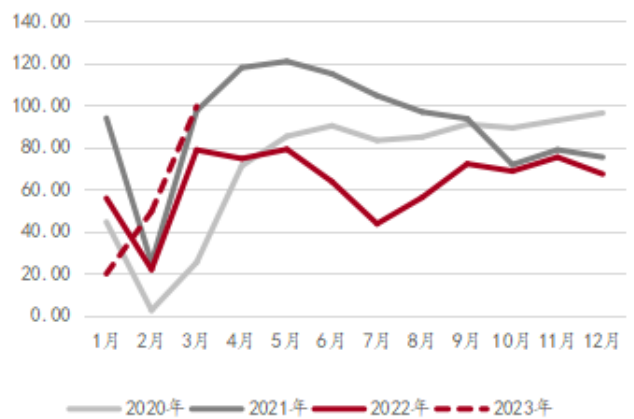
3						100 /
	2	63%	3	46.5%		
	2	230.15	3	238.32		8.17
3.55%						
			40			
3			2	64.91%	76.86%	2 49.35
3	99.28			201%		
3					4	



5



6



2.2				4									
		4		30				432.55					
22.24%			83.11%										
			3-6										
3				25.63				1.92%					37.85%
		3.76%		9.75%	4								
2022	4					18%		23	2		7.5%		
			3	24	-3	31							
							250						
							563.25			584.9		3.7%	
	165.4		89%								2.4%		
											3		
	2												
7		30											8

11

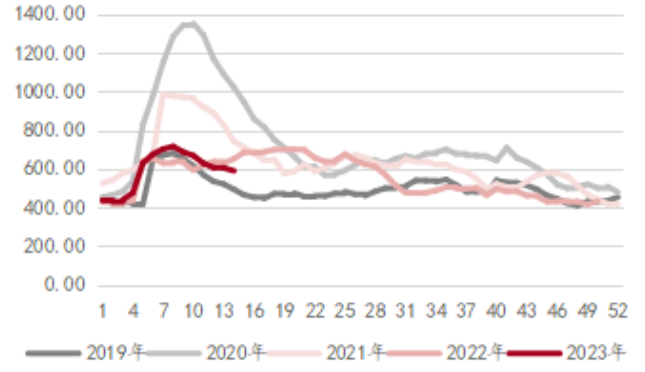
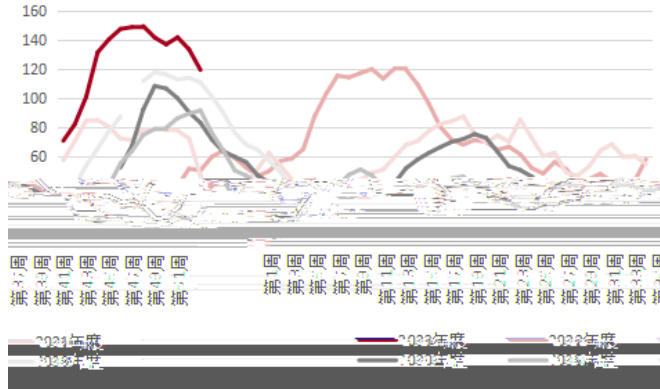
12

2.3

3 30

6

3



3.

4

" " " "

4.

9-1

1.

/	Mar-23	Feb-23		Mar-22	
	924.87	894.85	30	972.48	-4.90%
	898.94	872.9	26	818.57	9.82%
	25.93	21.95	4	153.91	-83.15%

3

25.93 4.9% 4 26 / 83.15% 30 / 9.82%
PB

2.

2.1

3 2 7.6% 1 4 10%
2023 3 2907.2 2 2702.53

3

4

2.2		3.55%		7.64%				
MYSTEEL		2023	3		238.32		2023	2
230.15		8.17		2022	221.4		7.64%	
						4		
Mysteel		4	7		2.0	/	2	
		0.7	/				4	
244.4	/	245	/					

5

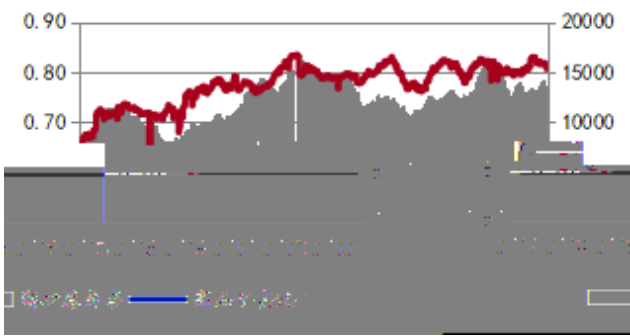
()

6

2.3

3500 25 2800 4 27 5 760 17

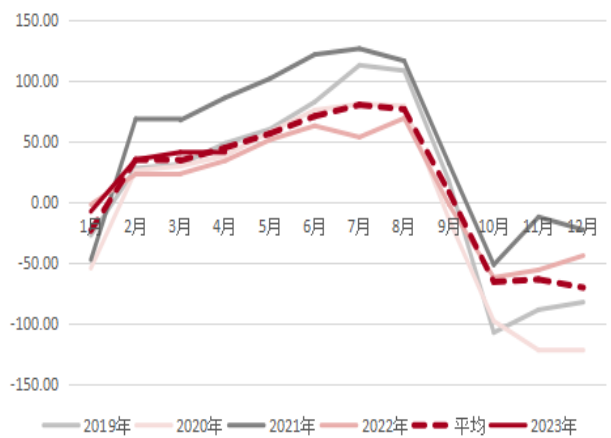
7 8



3.

5 9-1 40

9 10 9-1



4.

9 1

5

9

9-1

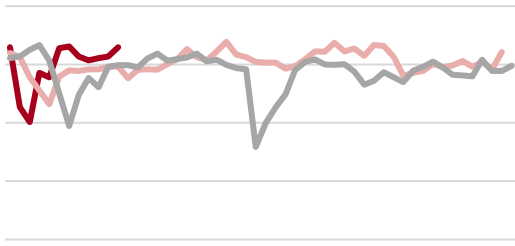
1.

1 110

/

2: 110

%



— — —

WIND

3

4: 110

WIND

2.2

3

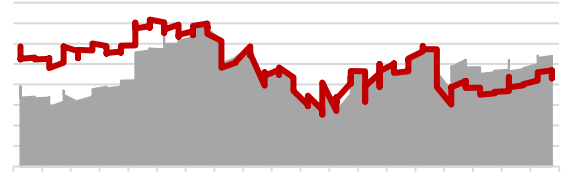
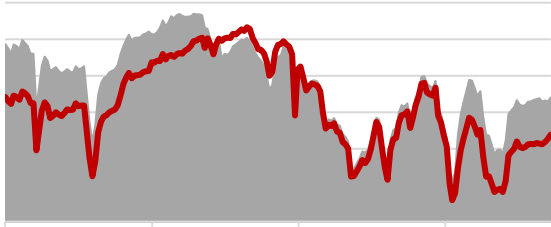
2023 1-2

3

3.6%

2022 12

	2			72.5%		
3%	66.9	/	0.1	109.4		7.8
	980.2		10.7			73.9%
1.4%	67	2		103.4	6	
			47.4			87.39%
	653.86		19	12.48	2	0.5



3.

09 / 09 09

1589

901

200122

: 61088088

: 61088066

400 8208899

200

39

200120

: (8621) 6860 4866

: (8621) 5888 3554

1

20

: (852) 2867 6333

: (852) 2147 9513